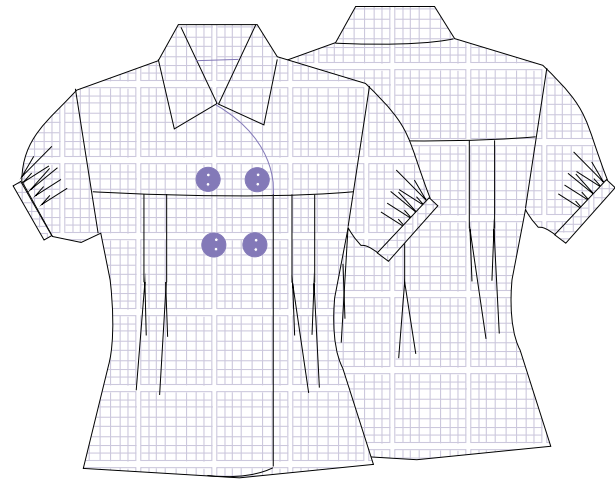


Blusa Xadrez - Manequim - 44

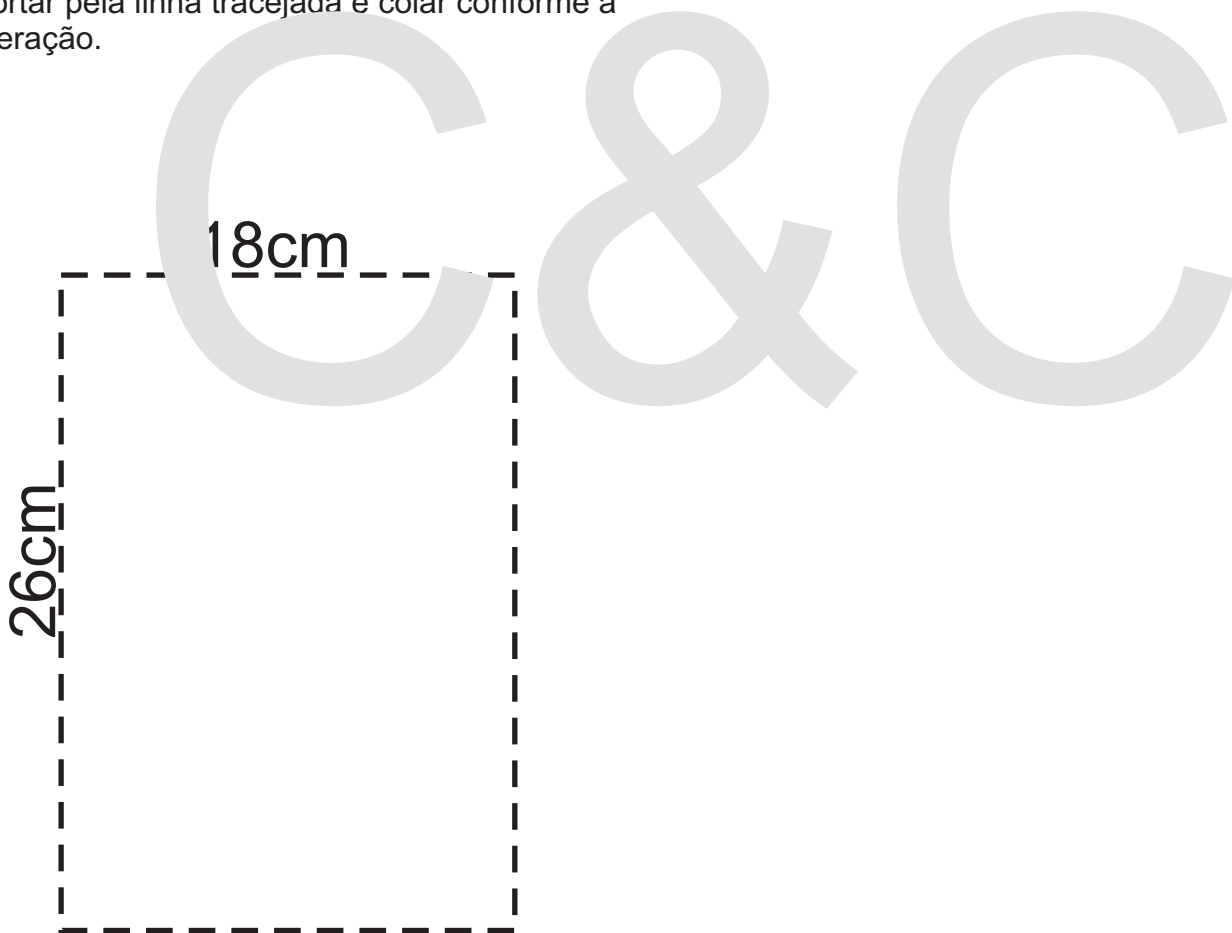
Tecido  
- 1,20m de Tricoline  
(Tecido com 1,40m de Largura)

O Molde está no tamanho exato, ao cortar no tecido deixar margens para as costuras e bainhas.

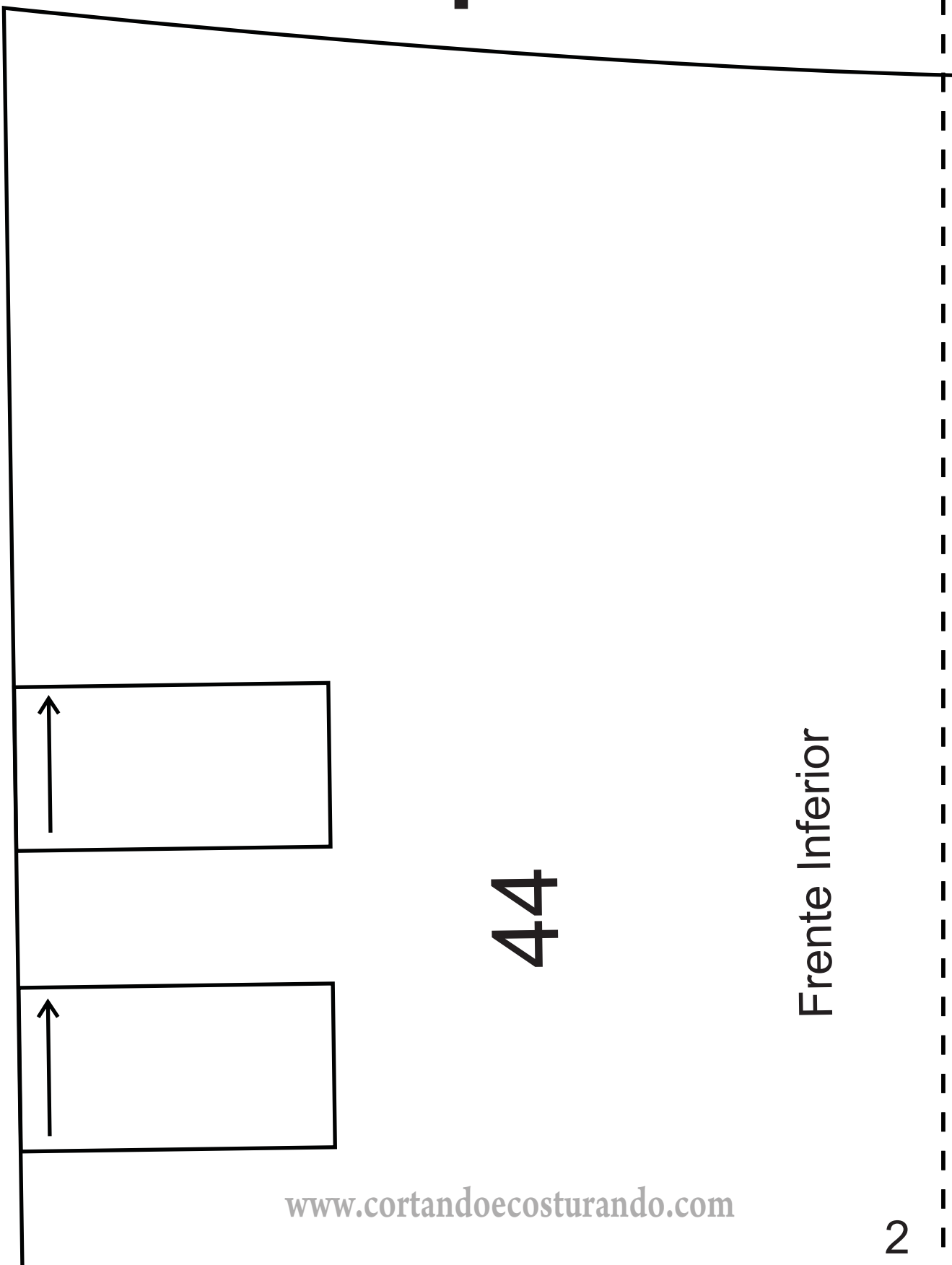


Após a impressão a grade de cada folha deve ficar com 18cm de Largura por 26cm de Altura.

Recortar pela linha tracejada e colar conforme a numeração.



1

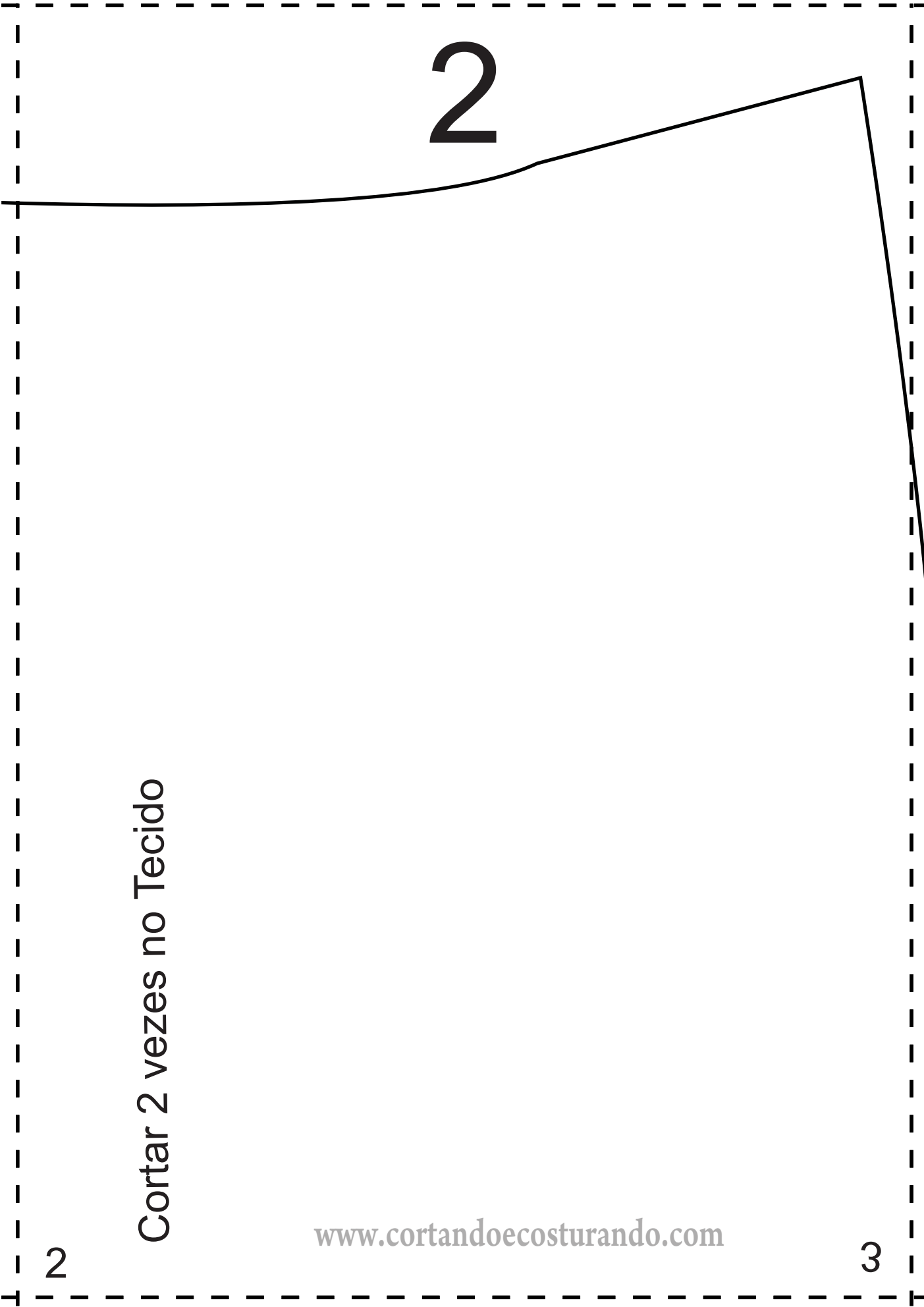


44

Frente Inferior

1

2



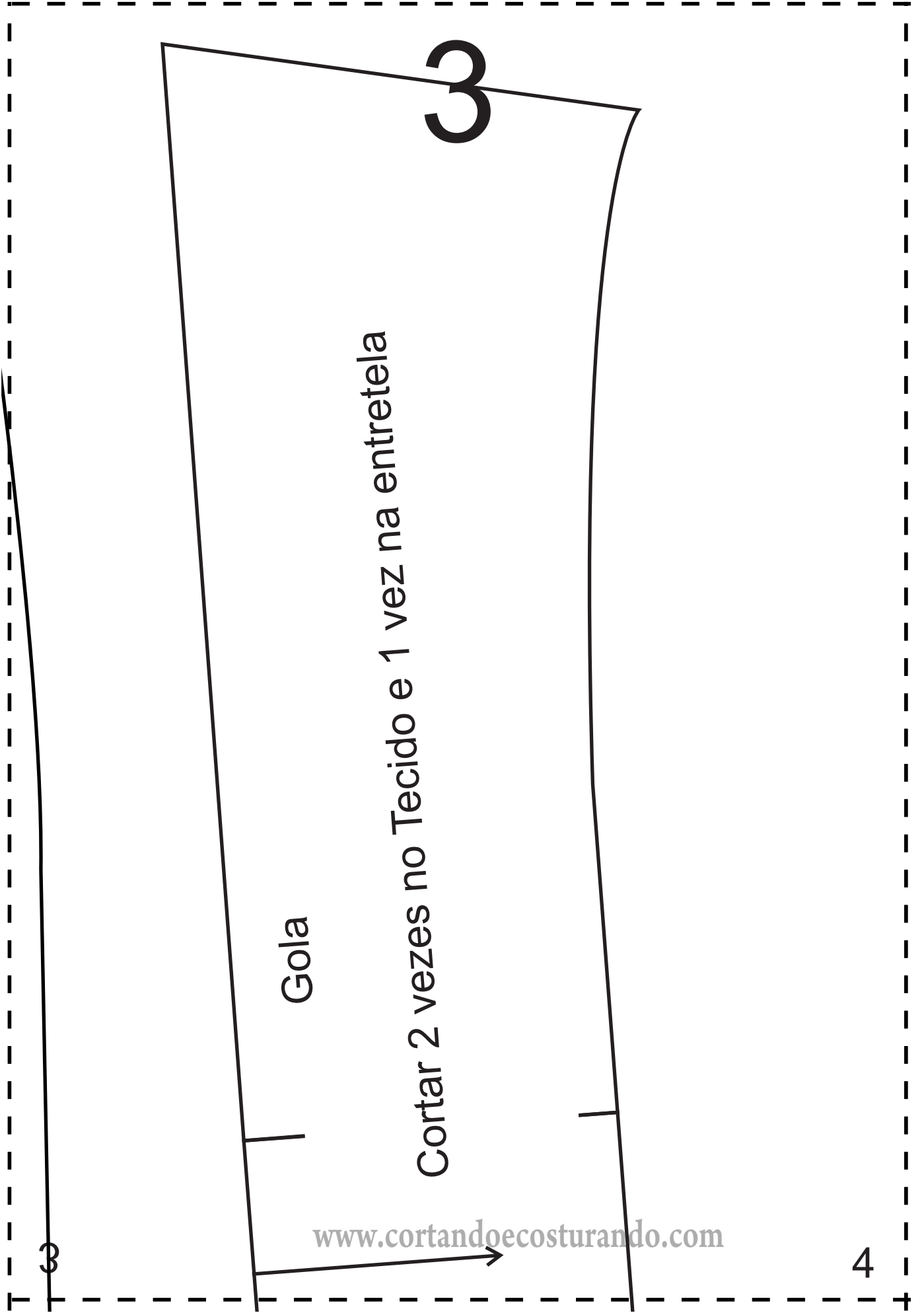
2

Cortar 2 vezes no Tecido

2

3

[www.cortandoeocosturando.com](http://www.cortandoeocosturando.com)



3

Cortar 2 vezes no Tecido e 1 vez na entretela

Gola

[www.cortandoeocosturando.com](http://www.cortandoeocosturando.com)

3

4

4

44

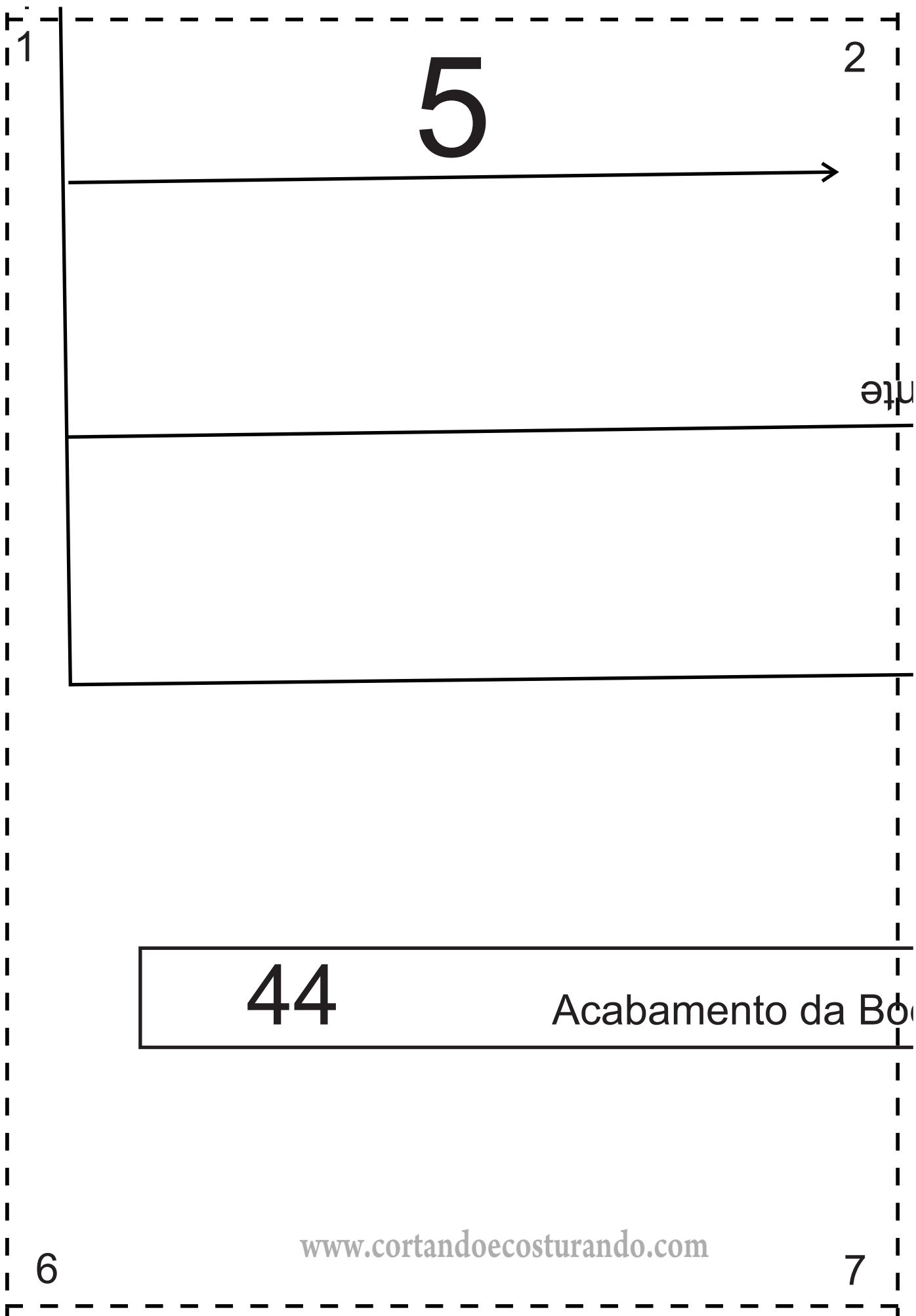
Cortar 2 vezes no Tecido

Acabamento Frente Superior

4

[www.cortandoecosturando.com](http://www.cortandoecosturando.com)

5



2

6

3

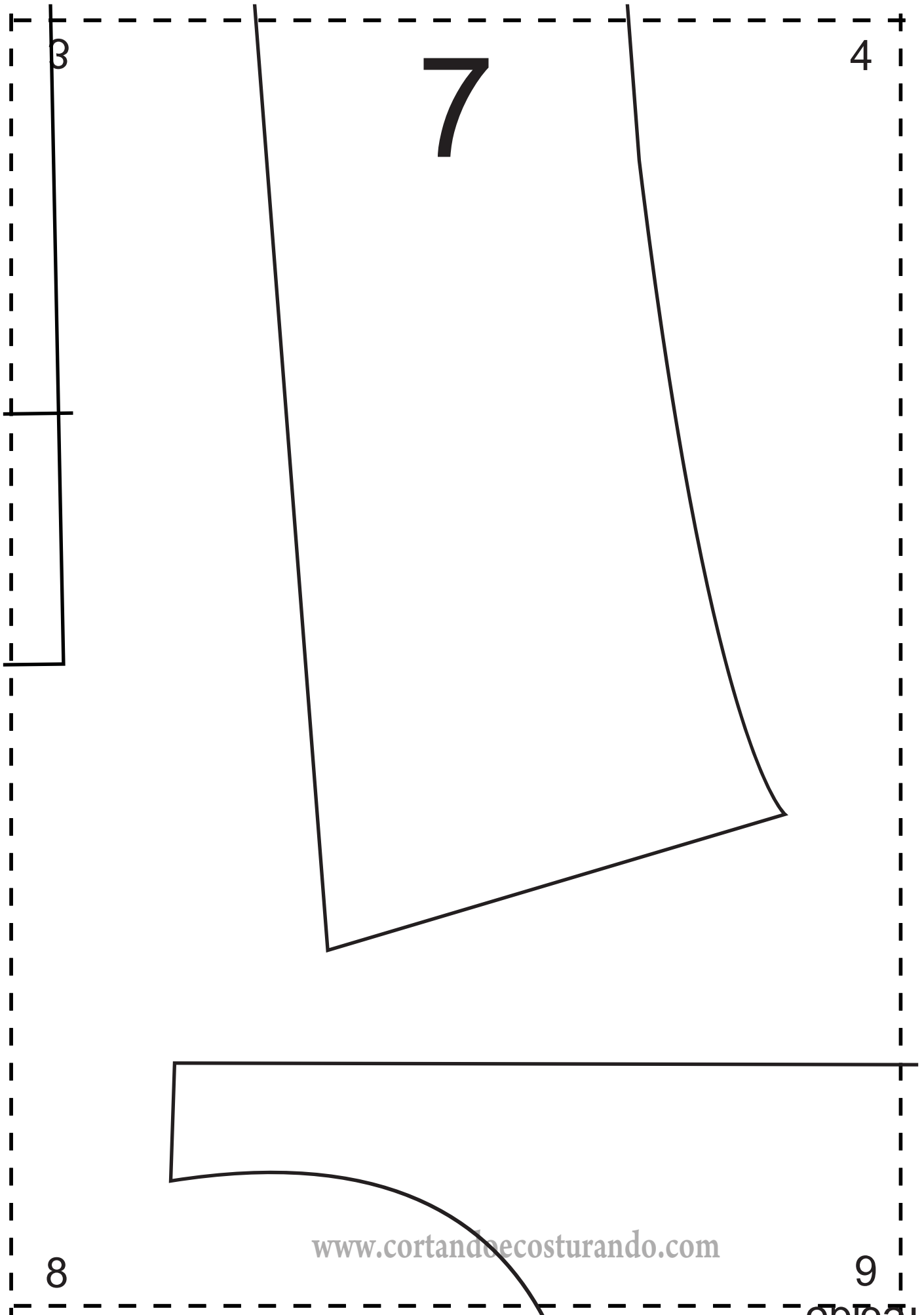
Centro da Frente

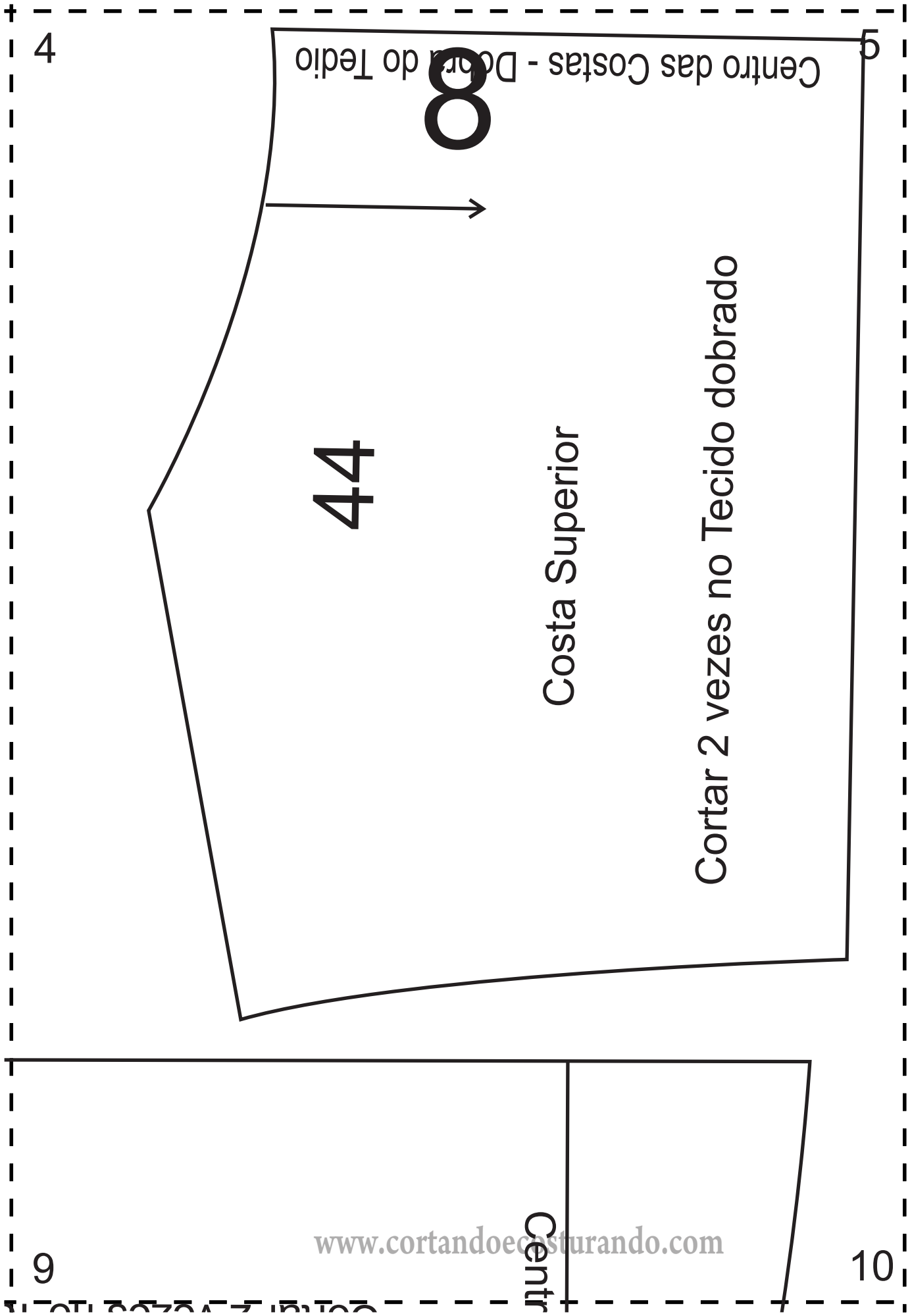
oca da manga

7

[www.cortandoecosturando.com](http://www.cortandoecosturando.com)

8





Centro das Costas - Dobra do Tedio

8

44

Costa Superior

Cortar 2 vezes no Tecido dobrado

www.cortandoeesturando.com

Centro

4

9

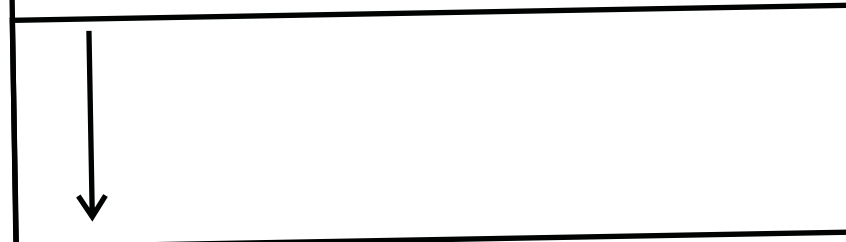
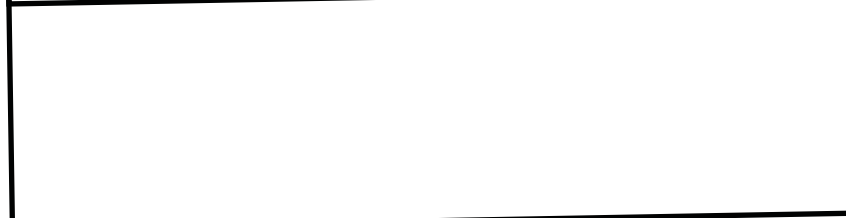
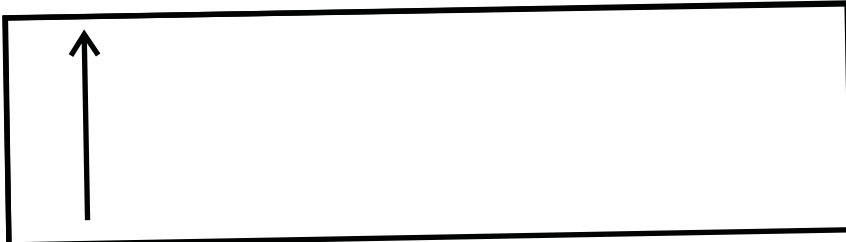
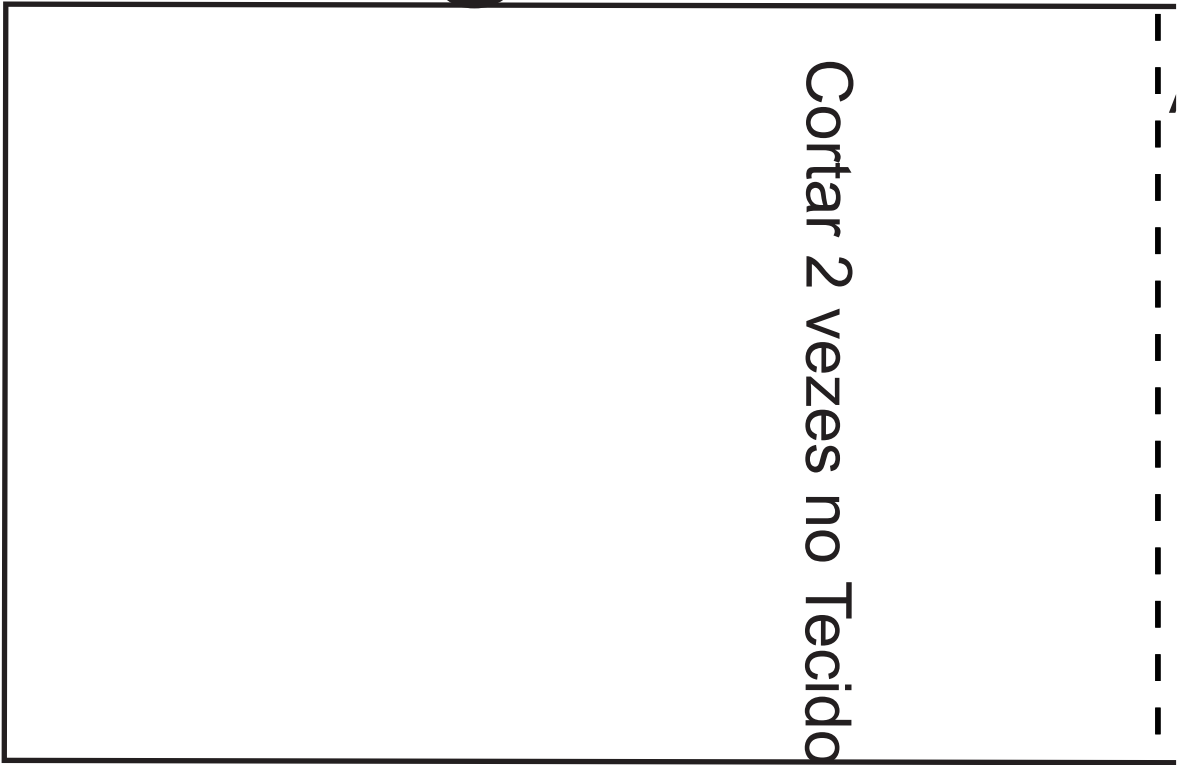
9

10

6

9

7



opc

11

12

7

10

8

Acabamento Frente Inferior

44



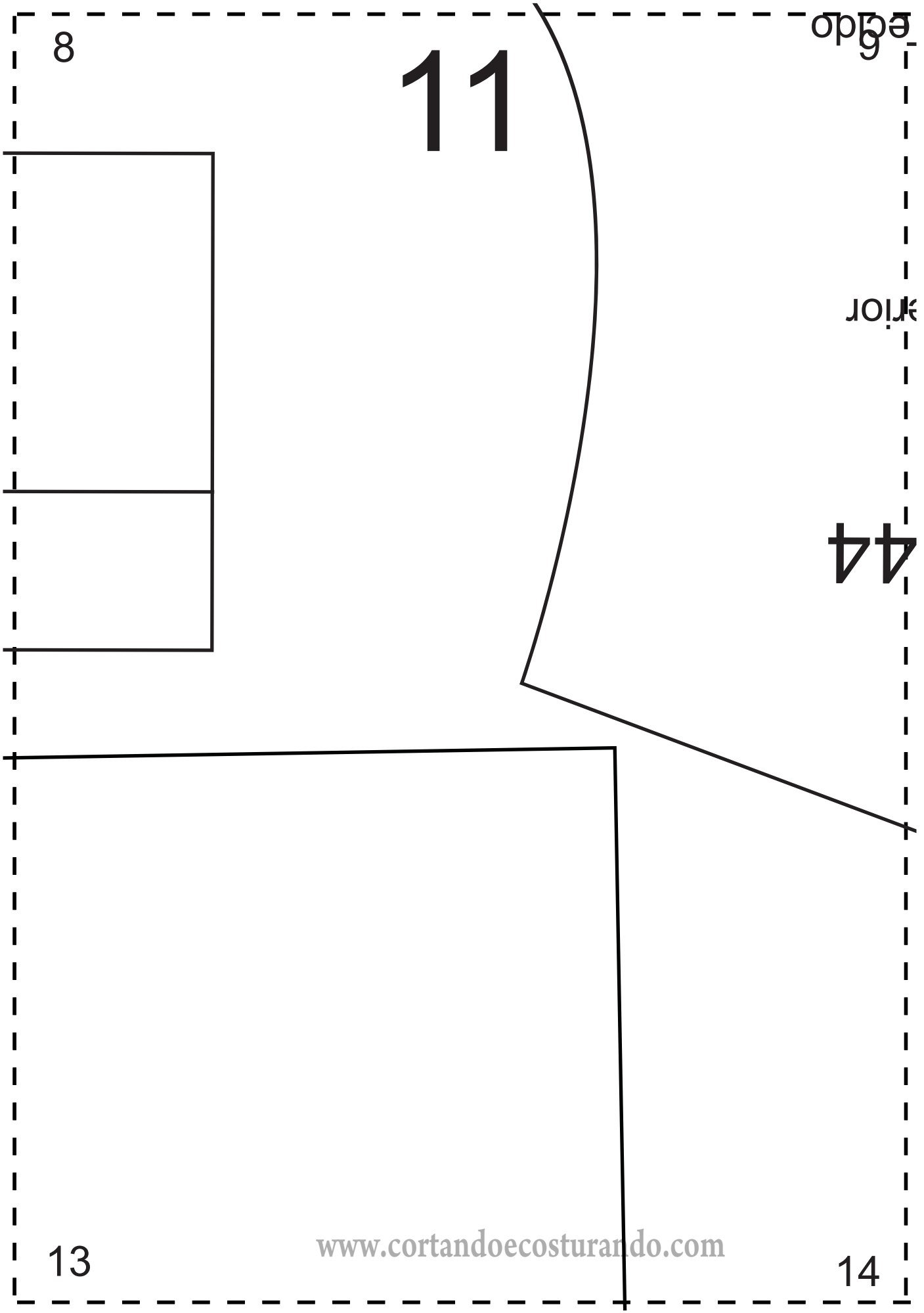
Centro das Costas - Dobra do Tecido

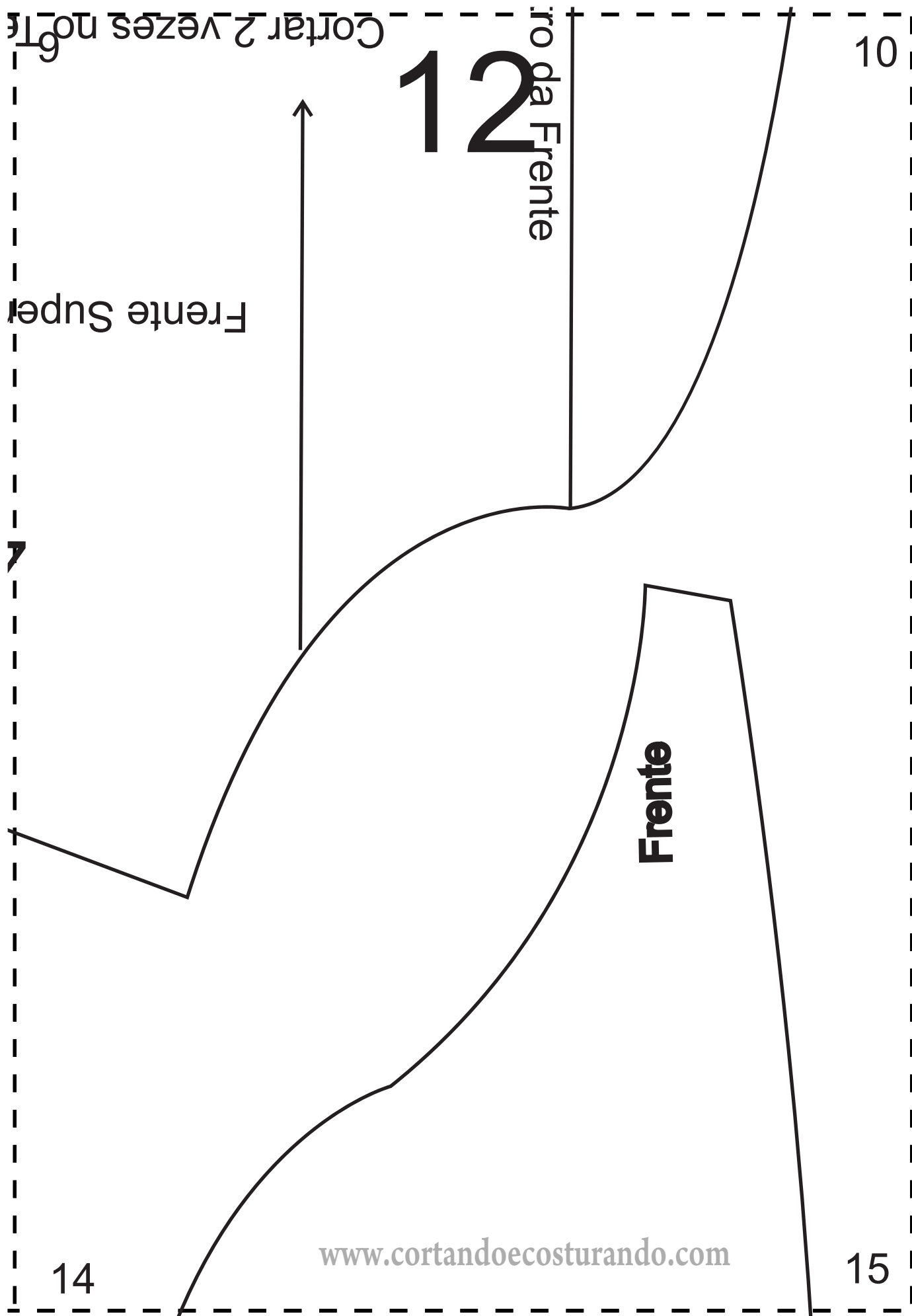
12

[www.cortandoecosturando.com](http://www.cortandoecosturando.com)

13

ida





Cortar 2 vezes no fio

10

12  
Buro da Frente

Frente Super

Frente

14

www.cortandocosturando.com

15

11

12

13



44

Costa Inferior<sup>1</sup>

14

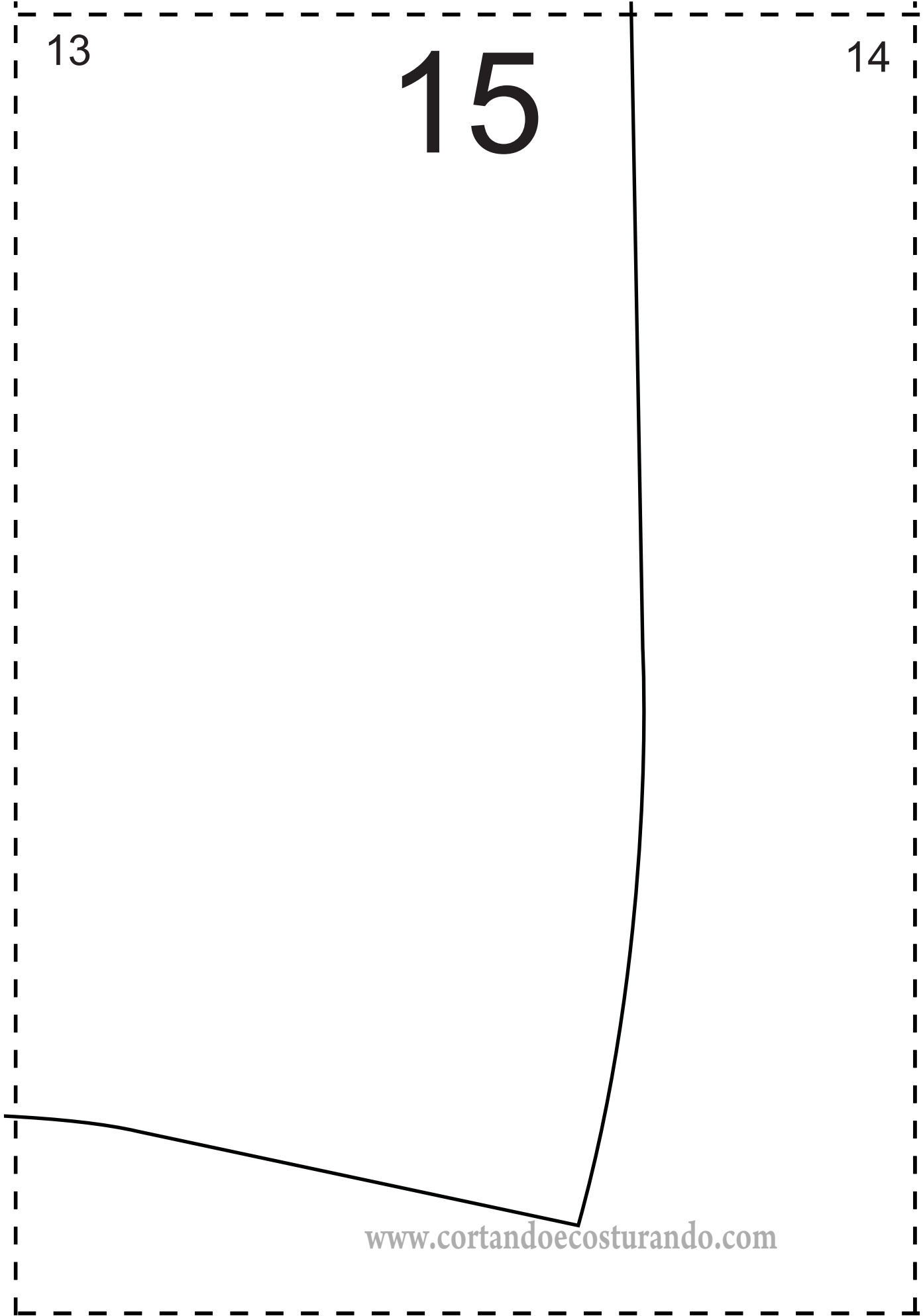
Cortar 1 vez no Tecido Dobrad

13

13

15

14



14

15

16

manga

44

Cortar 2 vezes em Pleno Viés

**Costa**