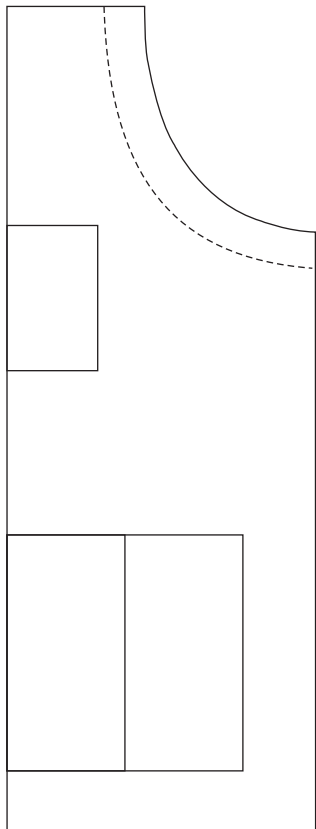
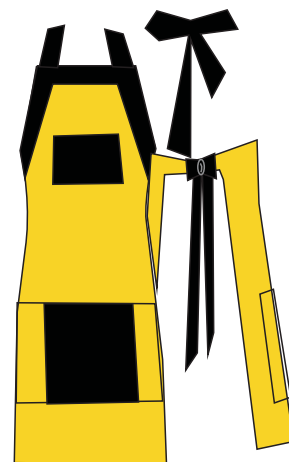


Avental



Alças

Cortar 4 tiras de 60cm com 8cm de Largura.



Material necessário:

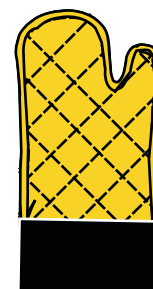
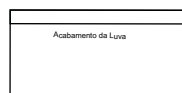
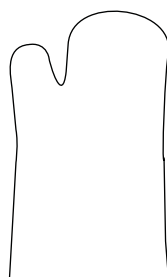
Luva

Tecido:
0,50m de Sarja e 0,50m de popeline
0,50m de manta acrílica

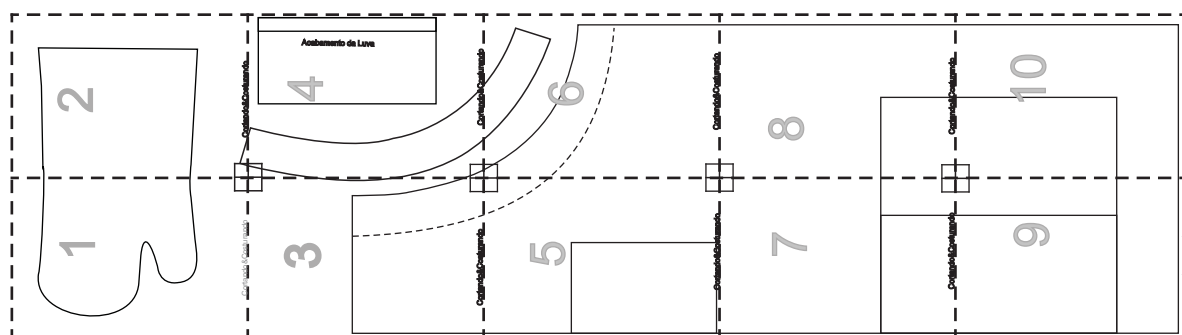
Avental

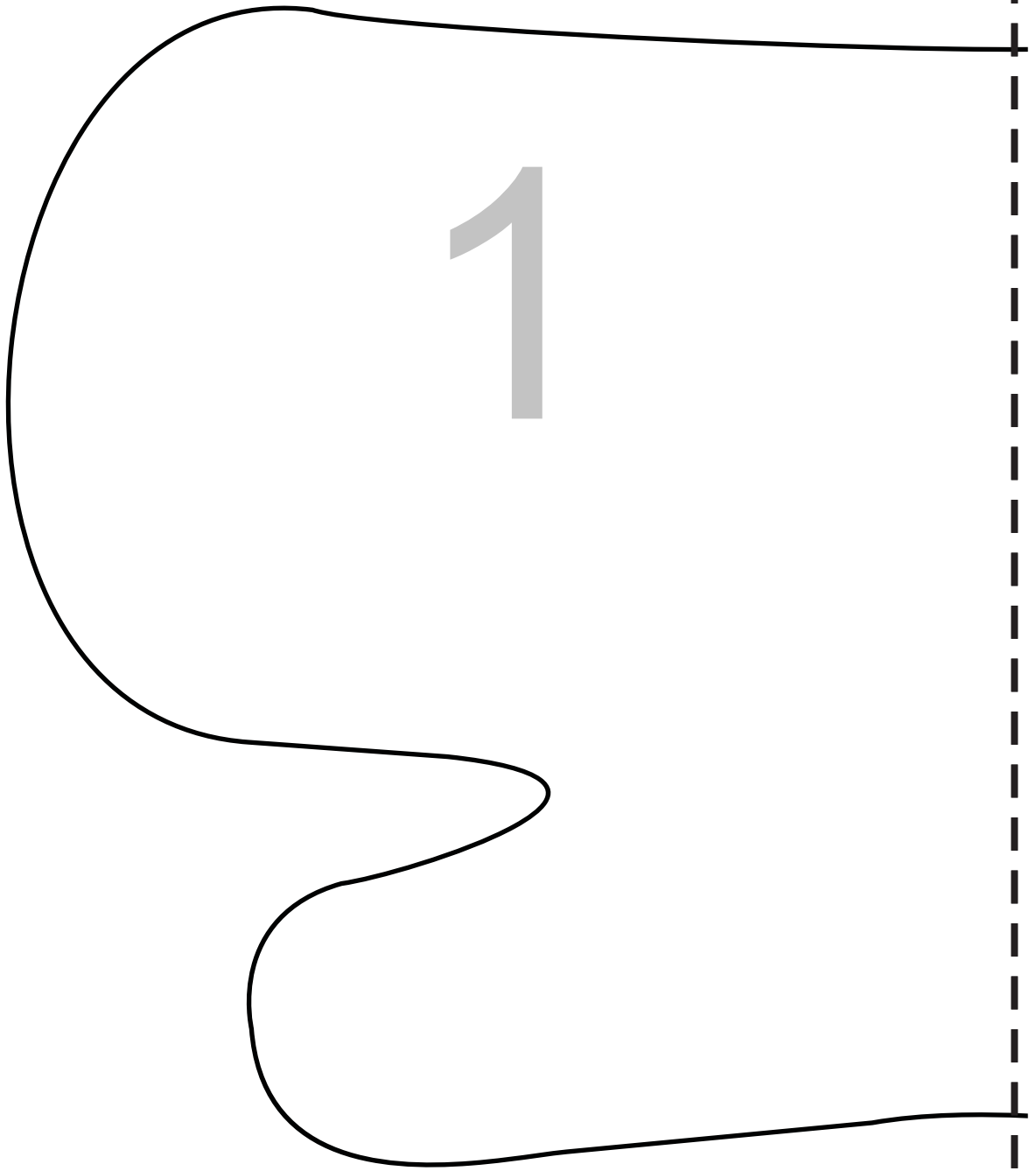
1m de Brim para o Avental.
0,60m de Brim para as Alças, Bolsos e
Acabamento da Cava

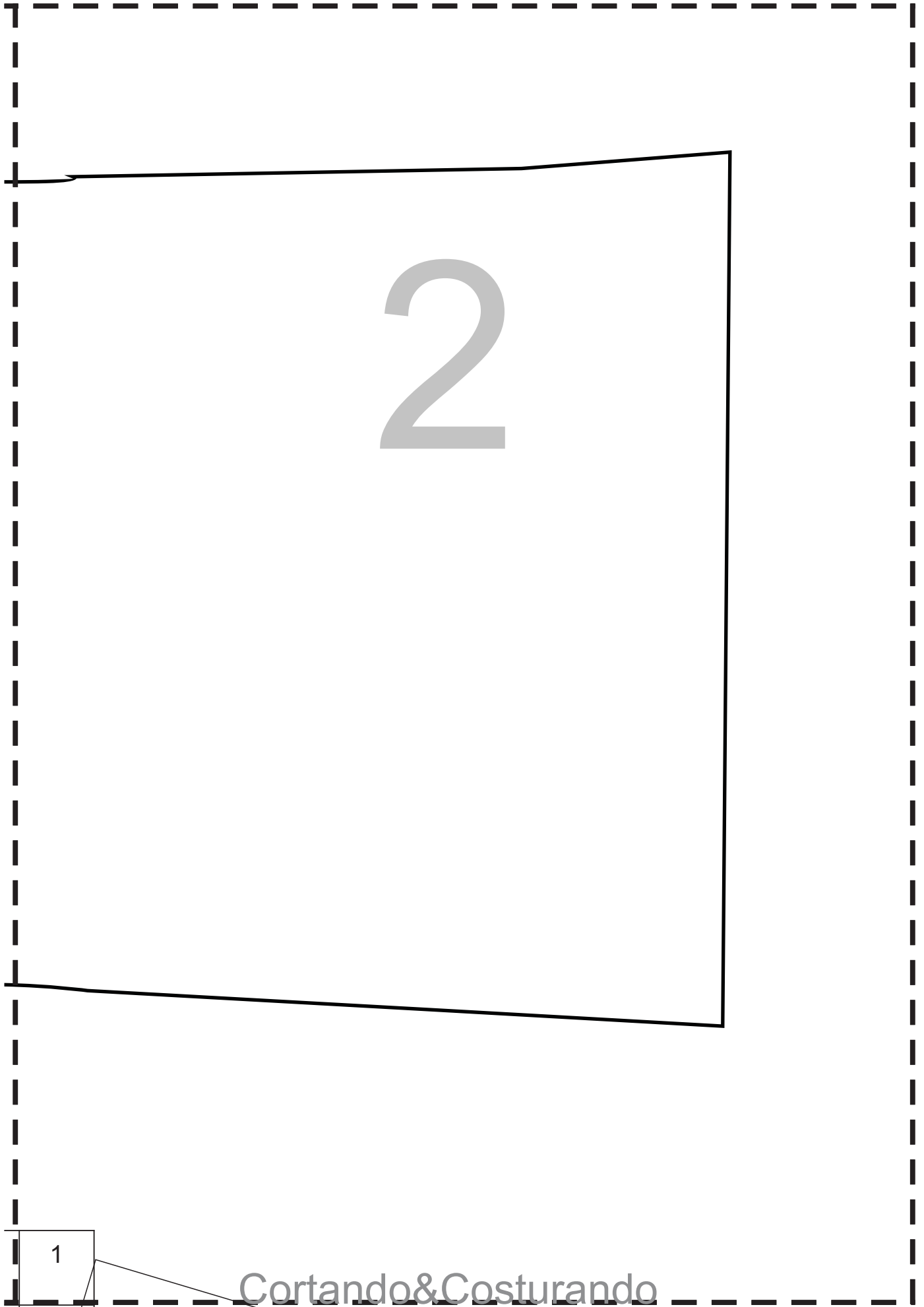
Luva



Imprimir em papel A4 e unir as folhas conforme orientações para Moldes Online.





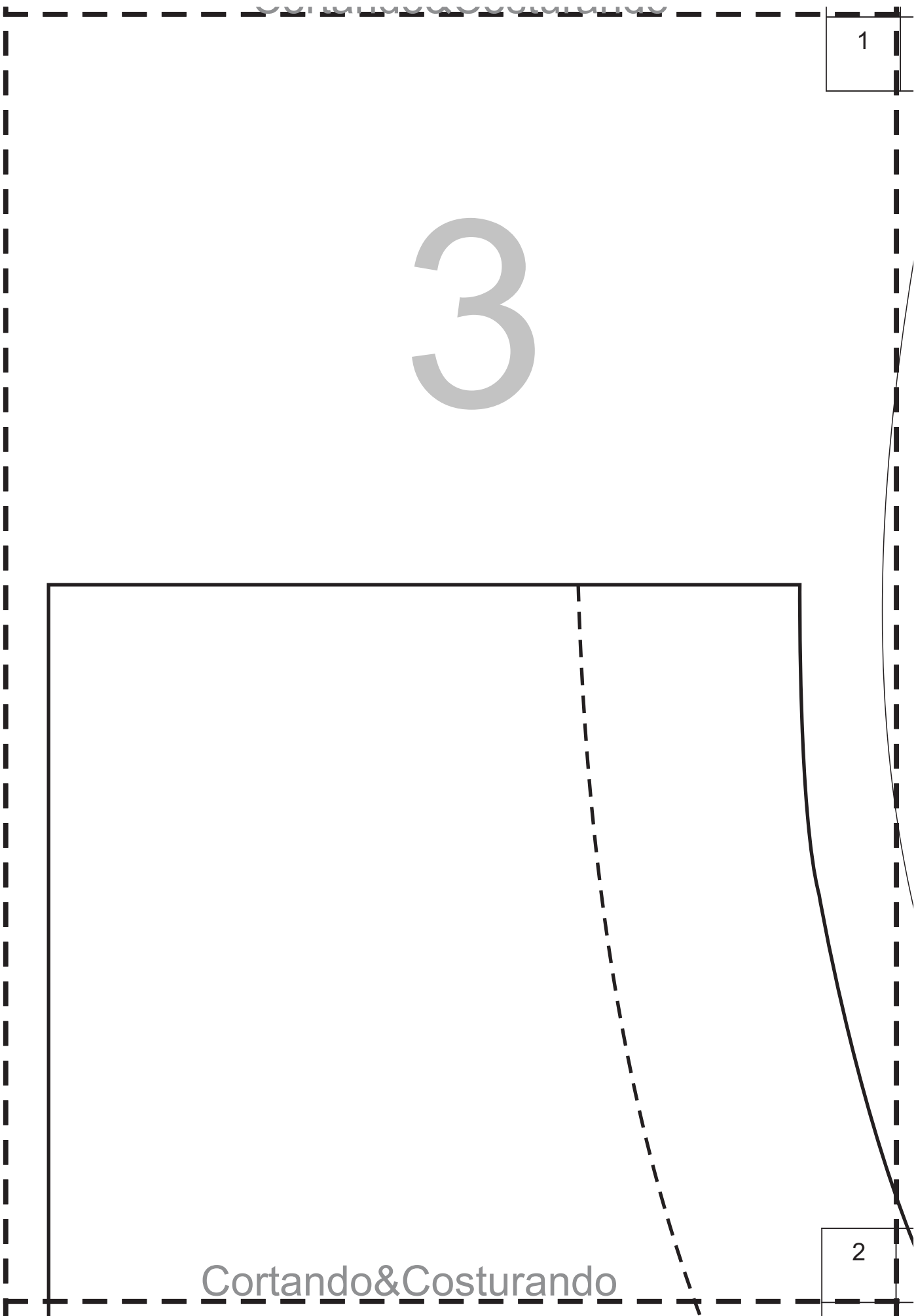


3

1

2

Cortando&Costurando



1

4

Acabamento da Luva

2

5

2

3

2

6

3

7

3

8

4

Cortando&Costurando

9

4